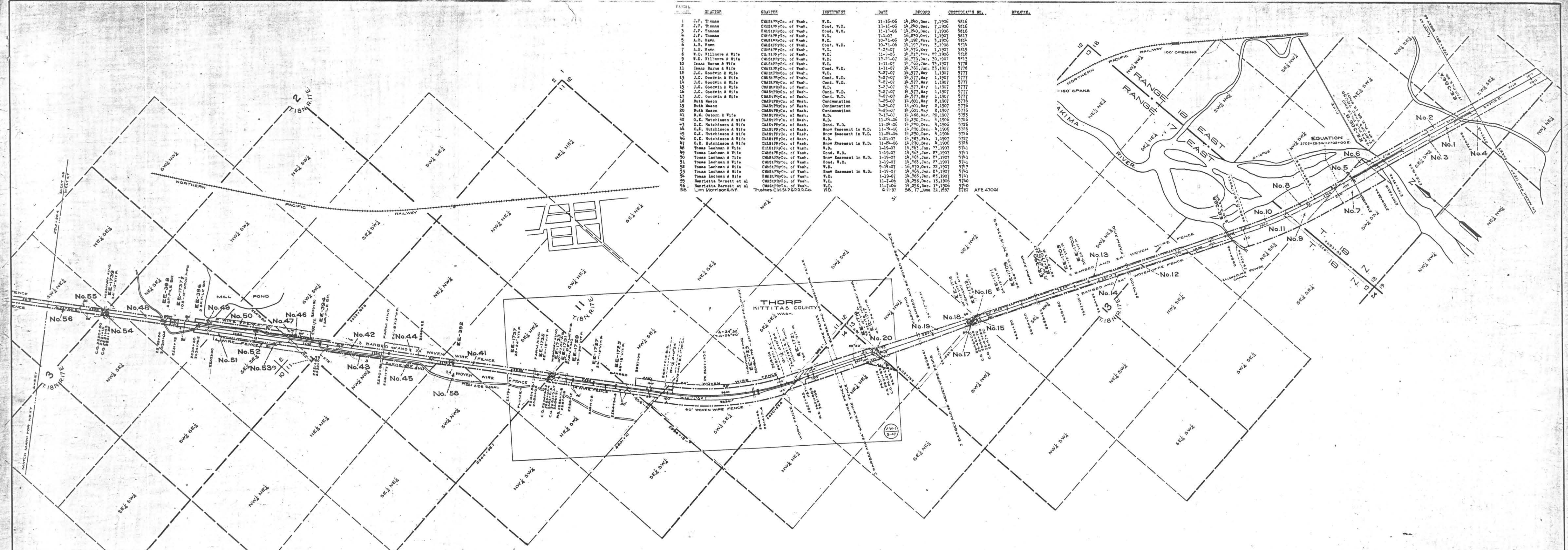


PARCEL NUMBER	GRANTOR	GRATTEE	INSTRUMENT	DATE	RECORD	CUSTODIAN'S NO.	REMARKS
1	J.F. Thomas	CM&STP Ry Co. of Wash.	W.D.	11-15-06	18,240, Dec. 7, 1906	5616	
2	J.F. Thomas	CM&STP Ry Co. of Wash.	Cond. W.D.	11-15-06	18,240, Dec. 7, 1906	5616	
3	J.F. Thomas	CM&STP Ry Co. of Wash.	W.D.	11-15-06	18,240, Dec. 7, 1906	5616	
4	J.F. Thomas	CM&STP Ry Co. of Wash.	W.D.	7-1-07	16,870, Oct. 1, 1907	5617	
5	A.B. Harn	CM&STP Ry Co. of Wash.	W.D.	10-21-06	18,192, Nov. 3, 1906	5618	
6	A.B. Harn	CM&STP Ry Co. of Wash.	Cont. W.D.	10-21-06	18,192, Nov. 3, 1906	5618	
7	J.B. Harn	CM&STP Ry Co. of Wash.	W.D.	7-2-07	18,276, May 1, 1907	5619	
8	W.D. Killmore & Wife	CM&STP Ry Co. of Wash.	W.D.	11-2-06	18,212, Dec. 23, 1906	5620	
9	W.D. Killmore & Wife	CM&STP Ry Co. of Wash.	W.D.	12-27-07	16,775, Dec. 30, 1907	5621	
10	Isaac Burns & Wife	CM&STP Ry Co. of Wash.	W.D.	11-11-07	18,765, Jan. 23, 1907	5776	
11	Isaac Burns & Wife	CM&STP Ry Co. of Wash.	Cond. W.D.	11-11-07	18,765, Jan. 23, 1907	5776	
12	J.C. Goodwin & Wife	CM&STP Ry Co. of Wash.	W.D.	4-27-07	18,577, May 1, 1907	5777	
13	J.C. Goodwin & Wife	CM&STP Ry Co. of Wash.	Cond. W.D.	4-27-07	18,577, May 1, 1907	5777	
14	J.C. Goodwin & Wife	CM&STP Ry Co. of Wash.	W.D.	4-27-07	18,577, May 1, 1907	5777	
15	J.C. Goodwin & Wife	CM&STP Ry Co. of Wash.	Cond. W.D.	4-27-07	18,577, May 1, 1907	5777	
16	J.C. Goodwin & Wife	CM&STP Ry Co. of Wash.	W.D.	4-27-07	18,577, May 1, 1907	5777	
17	J.C. Goodwin & Wife	CM&STP Ry Co. of Wash.	Cond. W.D.	4-27-07	18,577, May 1, 1907	5777	
18	Ruth Mason	CM&STP Ry Co. of Wash.	W.D.	4-25-07	18,601, May 2, 1907	5778	
19	Ruth Mason	CM&STP Ry Co. of Wash.	Condensation	4-25-07	18,601, May 2, 1907	5778	
20	Ruth Mason	CM&STP Ry Co. of Wash.	W.D.	4-25-07	18,601, May 2, 1907	5778	
21	Ruth Mason	CM&STP Ry Co. of Wash.	Condensation	4-25-07	18,601, May 2, 1907	5778	
22	Ruth Mason	CM&STP Ry Co. of Wash.	W.D.	4-25-07	18,601, May 2, 1907	5778	
23	Ruth Mason	CM&STP Ry Co. of Wash.	Condensation	4-25-07	18,601, May 2, 1907	5778	
24	Ruth Mason	CM&STP Ry Co. of Wash.	W.D.	4-25-07	18,601, May 2, 1907	5778	
25	Ruth Mason	CM&STP Ry Co. of Wash.	Condensation	4-25-07	18,601, May 2, 1907	5778	
26	Ruth Mason	CM&STP Ry Co. of Wash.	W.D.	4-25-07	18,601, May 2, 1907	5778	
27	Ruth Mason	CM&STP Ry Co. of Wash.	Condensation	4-25-07	18,601, May 2, 1907	5778	
28	Ruth Mason	CM&STP Ry Co. of Wash.	W.D.	4-25-07	18,601, May 2, 1907	5778	
29	Ruth Mason	CM&STP Ry Co. of Wash.	Condensation	4-25-07	18,601, May 2, 1907	5778	
30	Ruth Mason	CM&STP Ry Co. of Wash.	W.D.	4-25-07	18,601, May 2, 1907	5778	
31	Ruth Mason	CM&STP Ry Co. of Wash.	Condensation	4-25-07	18,601, May 2, 1907	5778	
32	Ruth Mason	CM&STP Ry Co. of Wash.	W.D.	4-25-07	18,601, May 2, 1907	5778	
33	Ruth Mason	CM&STP Ry Co. of Wash.	Condensation	4-25-07	18,601, May 2, 1907	5778	
34	Ruth Mason	CM&STP Ry Co. of Wash.	W.D.	4-25-07	18,601, May 2, 1907	5778	
35	Ruth Mason	CM&STP Ry Co. of Wash.	Condensation	4-25-07	18,601, May 2, 1907	5778	
36	Ruth Mason	CM&STP Ry Co. of Wash.	W.D.	4-25-07	18,601, May 2, 1907	5778	
37	Ruth Mason	CM&STP Ry Co. of Wash.	Condensation	4-25-07	18,601, May 2, 1907	5778	
38	Ruth Mason	CM&STP Ry Co. of Wash.	W.D.	4-25-07	18,601, May 2, 1907	5778	
39	Ruth Mason	CM&STP Ry Co. of Wash.	Condensation	4-25-07	18,601, May 2, 1907	5778	
40	Ruth Mason	CM&STP Ry Co. of Wash.	W.D.	4-25-07	18,601, May 2, 1907	5778	
41	Ruth Mason	CM&STP Ry Co. of Wash.	Condensation	4-25-07	18,601, May 2, 1907	5778	
42	Ruth Mason	CM&STP Ry Co. of Wash.	W.D.	4-25-07	18,601, May 2, 1907	5778	
43	Ruth Mason	CM&STP Ry Co. of Wash.	Condensation	4-25-07	18,601, May 2, 1907	5778	
44	Ruth Mason	CM&STP Ry Co. of Wash.	W.D.	4-25-07	18,601, May 2, 1907	5778	
45	Ruth Mason	CM&STP Ry Co. of Wash.	Condensation	4-25-07	18,601, May 2, 1907	5778	
46	Ruth Mason	CM&STP Ry Co. of Wash.	W.D.	4-25-07	18,601, May 2, 1907	5778	
47	Ruth Mason	CM&STP Ry Co. of Wash.	Condensation	4-25-07	18,601, May 2, 1907	5778	
48	Ruth Mason	CM&STP Ry Co. of Wash.	W.D.	4-25-07	18,601, May 2, 1907	5778	
49	Ruth Mason	CM&STP Ry Co. of Wash.	Condensation	4-25-07	18,601, May 2, 1907	5778	
50	Ruth Mason	CM&STP Ry Co. of Wash.	W.D.	4-25-07	18,601, May 2, 1907	5778	
51	Ruth Mason	CM&STP Ry Co. of Wash.	Condensation	4-25-07	18,601, May 2, 1907	5778	
52	Ruth Mason	CM&STP Ry Co. of Wash.	W.D.	4-25-07	18,601, May 2, 1907	5778	
53	Ruth Mason	CM&STP Ry Co. of Wash.	Condensation	4-25-07	18,601, May 2, 1907	5778	
54	Ruth Mason	CM&STP Ry Co. of Wash.	W.D.	4-25-07	18,601, May 2, 1907	5778	
55	Ruth Mason	CM&STP Ry Co. of Wash.	Condensation	4-25-07	18,601, May 2, 1907	5778	
56	Ruth Mason	CM&STP Ry Co. of Wash.	W.D.	4-25-07	18,601, May 2, 1907	5778	



RIGHT OF WAY AND TRACK MAP
CHICAGO, MILWAUKEE & ST. PAUL RY. CO.

OPERATED BY THE
CHICAGO, MILWAUKEE & ST. PAUL RY. CO.
 COLUMBIA DIVISION MAIN LINE
 STATION 2723+851 TO STATION 5252+904
 SCALE: 1 IN. = 400 FT. JUNE 30, 1915.
 OFFICE OF VALUATION ENGINEER
 CHICAGO, ILLINOIS.

Sheet No. 47 of 58 sheets of C. M. & St. P. Ry. Co. Main Line
 from survey station 8723+851 to survey station 8512+904
A.E. Lodge
 Valuation Engineer

